



# JUPITER AVIONICS

C O R P O R A T I O N

## JA77-005 / JA77-015 Dzus Rail Switch Plates with Removable Legends

### Data Sheet



### Description

#### Switches not included

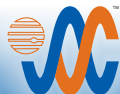
The JA77 Dzus Rail Switch Plate Series allows the aircraft customizer to present a professionally finished configurable switch panel for those ever-present extra switches.

The JA77-005 accepts standard aircraft grade toggle switches (i.e. Honeywell TL series or MS24523) and the JA77-015 accepts standard ¼ inch Bushing Mini-Toggle Switches.

Blank legends and hole plugs are also available to cover unused switch positions.

### Features

- Accommodation for up to four toggle switches (not included).
- Two legends per switch.
- Each legend is fully dimmable from a +28 Volt light dimmer bus.
- Up to five characters per removable legend.
- Dzus plate has a baked-on flat urethane paint finish to resist scratches and nicks.



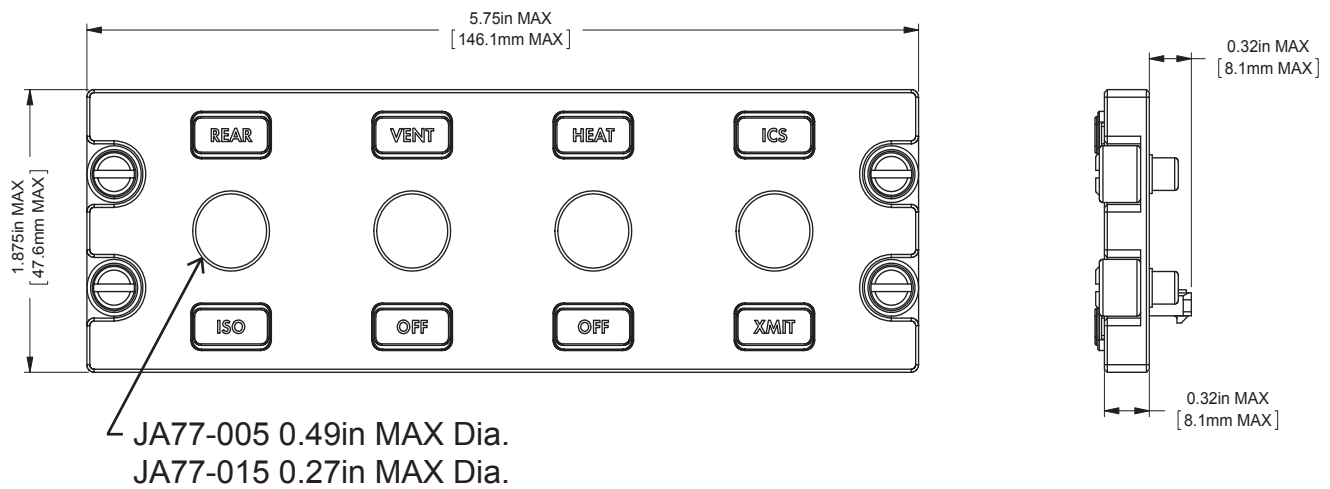
1959 Kirschner Rd, Kelowna, BC V1Y 4N7  
Tel: 778-478-2232 Toll-Free (855) 478-2232

[www.jupiteravionics.com](http://www.jupiteravionics.com)

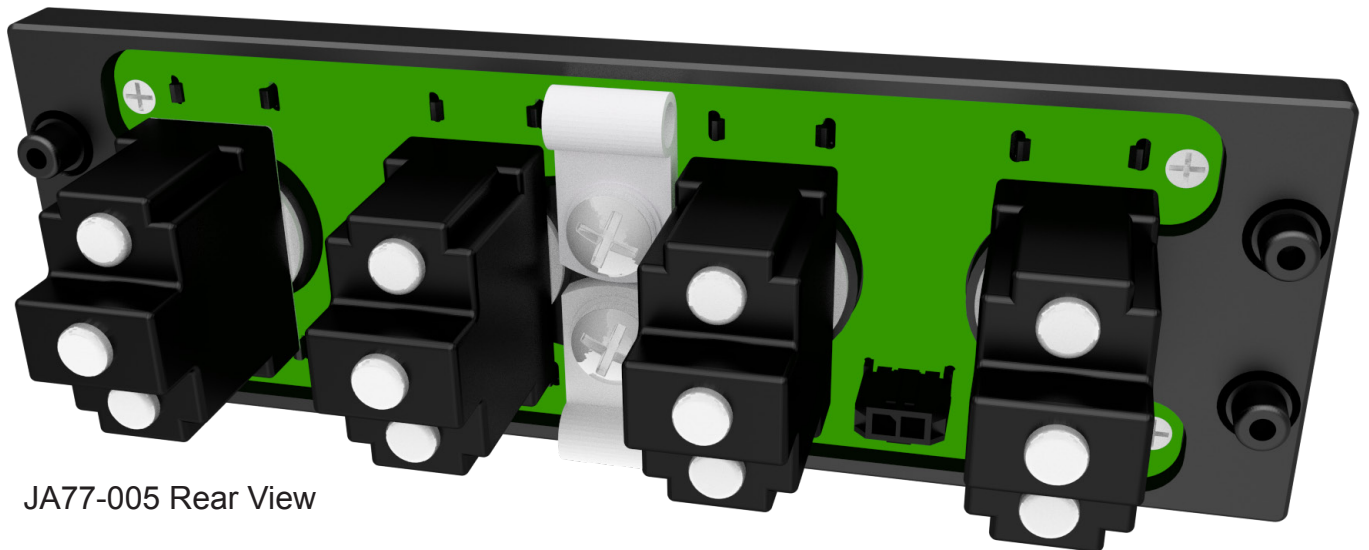


# JA77-005 Specifications

## Installation



Connector: Micro Fit 3.0, 2 pin Header, Included.  
Mating Connector: Micro Fit 3.0, 2 pin Receptacle, Included.



JA77-005 Rear View

Note: Switches and Strain Reliefs are not included; shown is a typical installation example.